



TAURULIFT
T 307 H



www.ansa.com

AUSA Center, S.L. ● Ctra. de Vic, Km 2.8 - P.O.B. 194, 08243 Manresa - BARCELONA (ESPAÑA) Tel.: +34 93 874 73 11 E-mail: ansa@ansa.com



ISO 9001 ISO 14001



AUSA Madrid ● Pol. Ind. Coslada-Marconi 15-17, 28823 Coslada - MADRID (ESPAÑA) Tel.: +34 91 669 00 06 E-mail: ansa.madrid@ansa.com

AUSA France ● Z. I. Saint Charles-Rue de Zürich, 66000 PERPIGNAN (FRANCE) Tel.: +33 (0) 4 68 54 38 97 E-mail: ansa.france@ansa.com

AUSA Verkauf & Service Deutschland ● Heinrich-Welken Str. 5, 59069 HAMM - RHYERN (GERMANY) Tel.: +49 (0) 2385-9359362 E-mail: ansa.deutschland@ansa.com

BEIJING Rep. office ● Address Room 527, HengXiang Building, Tuanjiehu Nanli, Chaoyang District. - Beijing 100026 CHINA

Tel: 86-10-8597 1983 - Fax: 86-10-8597 1993 - E-mail: ansa.china@ansa.com

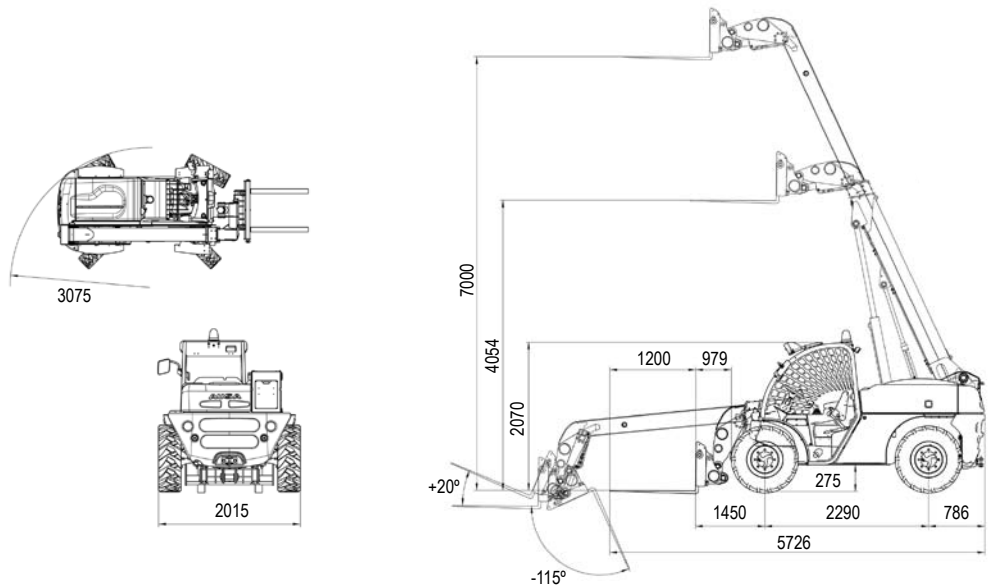
AUSA UK ● Sales: 07970639988 E-mail: ansa.uk@ansa.com

AUSA Northamerica Corp. ● E-mail: ansa.corp@ansa.com

(Sede central AUSA-Manresa)

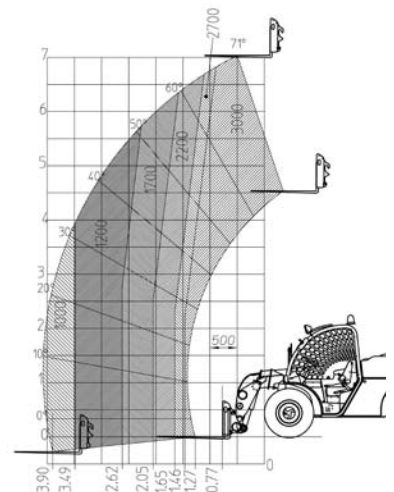
T 307 H

AUSA
www.ausa.com



TECHNICAL SPECIFICATIONS

		T 307 H
Load capacity	Max. load	3.000 Kg
	Load at max. height	3.000 Kg
Lifting height	Maximum lifting height	7.000 mm
	Lifting height at max. load	7.000 mm
Reach	Max reach	3.980 mm
	Capacity at max reach	1.000 Kg
Unload weight		5.500 Kg
Engine	Turbo-diesel	Kubota V-3600-T
	Power / rpm (DIN 70020)	62,3 kW (84,7 CV) / 2.400
	Torque	270 Nm
	Nº of cylinders	4
	Cooling system	Water
Traction		4x4 permanent
Direction	2 front wheels	Yes
	4 wheels	Yes
	Crab	Yes
Transmission		Hidrostatic 2 gear
Clutch		No
Engine starting system		Electric
Speed		20 Km/h
Axles		Dana Spicer
Gradient negotiable (with full load)		39%
Hydraulic circuit	Working pressure	260 bar
	Hydraulic pump	36 cc
	Flow circuit	73,4 l/min
Tyres	Front	14 - 17,5
	Rear	14 - 17,5
External turning circle (mm)		3.075 mm
Steering		Hydraulic
Tank capacity	Fuel	110 l
	Hydraulic fluid	70 l
Service brake		Disc brake
Parking brake		Mecanically actuated disk-brake



STANDARD EQUIPMENT

- Antivandalic system
- Height adjustable ergonomic seat
- Seat belt
- Joystick with 'total control' of movements
- Homologated ROPS-FOPS cabin
- Roating beacon
- Rear view mirror
- Audible reverse warning
- Power take off with quick coupler
- Tilting cabin for service
- Road Traffic Selector:
- Lock joystick and 2 front wheels steering
- Passive security system:
- Engine start lock with hand brake activated
- Control arm lock without driver
- Lighting equipment
- Working light
- Active security system: arm lock for rollover risk
- Semi-closed cabin
- Full cabin
- Air conditioning
- Universal quick hitch
- Bucket 700 lt
- Bucket 1.000 lt
- Load guard
- Limited slip differential on front axle
- Front protective grill
- Adjustable steering column

OPTIONAL EQUIPMENT

AUSA reserves the right to make any changes in the specifications without prior notice.