



TAURULIFT
T 306 H

AUSA LAUNCHES THE NEW TAURULIFT T 306 H

AUSA presents the **TAURULIFT T 306 H**: a new concept in forklift truck, with an extending lateral arm and folding cabin. This is a new, extremely compact model, with certain advantages which set it significantly apart from other lifting concepts on the market.

In developing the TAURULIFT T 306 H, AUSA has combined the values of the AUSA mast forklift product (vehicle compactness, ergonomics, robustness, intuitive vehicle control, off-road capabilities, operating safety and accessibility for maintenance), with those offered by the extending arm: variable-reach fork functionality, plus a reduced turning circle with 4x4 traction, thanks to its 4x4x4 traction and steering system.

Also - a first within the market of extending-arm forklifts - it is equipped with a front-folding cabin to facilitate access during maintenance work.



Features

- **All-terrain, compact, light, agile, safe machine** with a 3,000 kg capacity and 6.0 m in height, it is unique on the market and ideal for handling loads on difficult terrain and in narrow spaces with limited height.
- **Its compact, functional, robust design** enables the machine to be used on intense, tough work in small spaces.
- **Permanent 4x4 transmission and 3 steering modes** (front, crab and coordinated) combined with wide wheels and large ground clearance, enabling traction, load stability and good surmounting of obstacles on irregular and damp grounds.





- **Highly progressive and easy to operate REXROTH** hydrostatic transmission, ensuring greater work safety and productivity.
- **Comfortable cabin with large interior.** Ergonomic and intuitive controls (joystick), keeping fatigue to a minimum and making operation safer. Excellent 360° visibility.
- **Tilting cabin**, one of a kind on the market, makes it possible to gain easy access to all components for periodical maintenance.
- **Broad range of standard equipment:** active and passive security systems, anti-vandal protection, joystick with all functions built in.

- High productivity changing accessories and attachments with the optional front plate with Multi-Tach hydraulic system.



Multi-Tach quick hitch



Forks with side shift with Multi-Tach system



AUSA hidraulic bucket (700 l.)

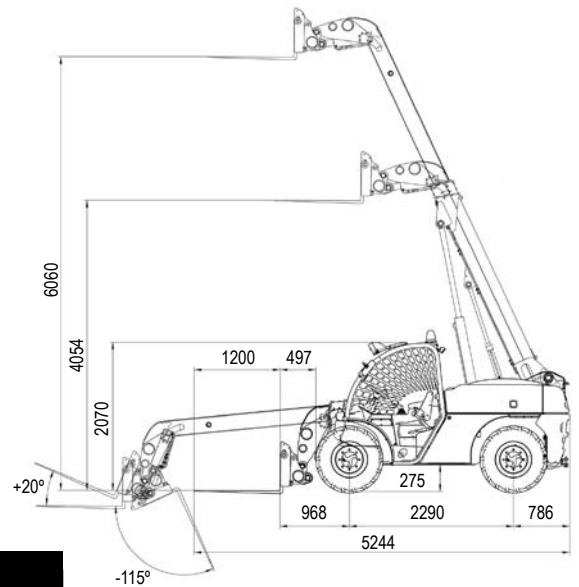
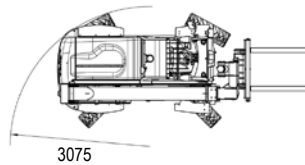
ALL TERRAIN: Permanent 4x4 transmission with a negotiable gradient of 45% and the highest ground clearance on the market (340mm). This, combined with the wide, large-diameter wheels, enable excellent traction, load stability and high surmounting of obstacles on irregular and damp grounds.



T 306 H_3000 kg

AUSA

www.ausa.com



TECHNICAL SPECIFICATIONS

Load capacity	Max. load (Kg)	3000
	Load at max. height (Kg)	2700
Lifting height	Maximum lifting height (mm)	6060
	Lifting height at max. load (mm)	5100
Reach	Max reach (mm)	3410
	Capacity at max reach (Kg)	1000
Unload weight (Kg)		5015
Engine	Turbo-diesel	Kubota V-3600-T
	Power / rpm (DIN 70020)	62.3 KW (84.7 CV) / 2400
	Torque	270 Nm
	Nº of cylinders	4
	Cooling system	Water
Traction		4x4 permanente
Direction	2 front wheels	Yes
	4 wheels	Yes
	Crab	Yes
Transmission		Hidrostatic 1 gear
Clutch		No
Engine starting system		Electric
Speed (km/h)		24
Axles		Dana Spicer
Gradient negotiable (with full load)		43%
Hydraulic circuit	Working pressure	260 bar
	Hydraulic pump	36 cc
	Flow circuit (l/min)	73.4
Tyres	Front	14 - 17.5
	Rear	14 - 17.5
External turning circle (mm)		3075
Steering		Hydraulic
Tank capacity	Fuel (l)	110
	Hydraulic fluid (l)	70
Service brake		Disc brake
Parking brake		Mecanically actuated disk-brake

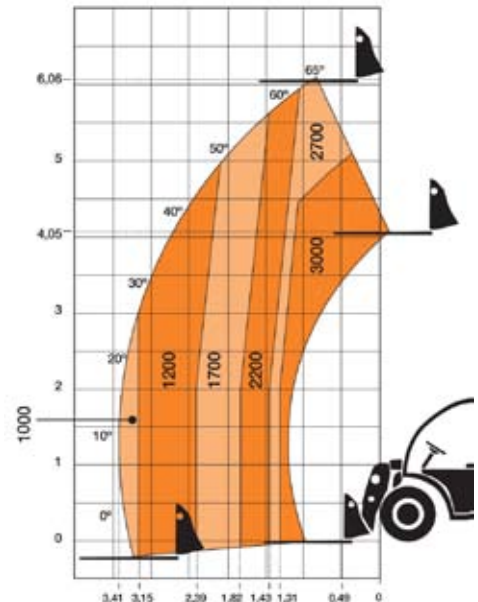
T 306 H

		3000
		2700
		6060
		5100
		3410
		1000
		5015
		Kubota V-3600-T
		62.3 KW (84.7 CV) / 2400
		270 Nm
		4
		Water
		4x4 permanente
		Yes
		Yes
		Yes
		Hidrostatic 1 gear
		No
		Electric
		24
		Dana Spicer
		43%
		260 bar
		36 cc
		73.4
		14 - 17.5
		14 - 17.5
		3075
		Hydraulic
		110
		70
		Disc brake
		Mecanically actuated disk-brake

STANDARD EQUIPMENT

- Antivandalic system
- Height adjustable ergonomic seat
- Seat belt
- Joystick with 'total control' of movements
- Homologated ROPS-FOPS cabin
- Roating beacon
- Rear view mirror
- Audible reverse warning
- Power take off with quick coupler
- Tilting cabin for service
- Road Traffic Selector:
- Lock joystick and 2 front wheels steering
- Passive security system:
- Visual and acoustic Tipping / Engine start lock with hand brake activated / Control arm lock without driver
- Lighting equipment
- Working light
- Active security system: arm lock for rollover risk
- Semi-closed cabin
- Full cabin
- Air conditioning
- Universal quick hitch
- Bucket 700 lt
- Bucket 1.000 lt
- Load guard
- Limited slip differential on front axle
- Front protective grill
- Adjustable steering column

OPTIONAL EQUIPMENT



AUSA reserves the right to make any changes in the specifications without prior notice.

MKT21037.00/10.2010

AUSA

www.ausa.com

AUSA Center, S.L. ● Ctra. de Vic, Km 2.8 - P.O.B. 194, 08243 Manresa - BARCELONA (ESPAÑA) Tel.: +34 93 874 73 11 E-mail: ausa@ausa.com



AUSA Madrid ● Pol. Ind. Coslada-Marconi 15-17, 28823 Coslada - MADRID (ESPAÑA) Tel.: +34 91 669 00 06 E-mail: ausa.madrid@ausa.com
AUSA France ● Z. I. Saint Charles-Rue de Zürich, 66000 PERPIGNAN (FRANCE) Tel.: +33 (0) 4 68 54 38 97 E-mail: ausa.france@ausa.com
AUSA Verkauf & Service Deutschland ● Heinrich-Welken Str. 5, 59069 HAMM - RHYNERN (GERMANY) Tel.: +49 (0) 2385-9358362 E-mail: ausa.deutschland@ausa.com
BEIJING Rep. office ● Address Room 527, HengXiang Building, Tuanjiehu Nanli, Chaoyang District. - Beijing 100026 CHINA
 Tel: 86-10-8597 1983 - Fax: 86-10-8597 1993 - E-mail: ausa.china@ausa.com
AUSA UK ● Sales: 07970639988 E-mail: ausa.uk@ausa.com
AUSA Northamerica Corp. ● E-mail: ausa.corp@ausa.com



(Sede central AUSA-Manresa)