

# IN THIS ISSUE



## 25 Concrete

Launches and upgrades aimed at enhancing performance, productivity and flexibility have shaped the concrete industry recently. Steve Skinner looks at some of the new and improved products in this well-established sector.



## 33 Ground engineering

The concept of sustainable construction is gaining popularity with equipment manufacturers and contractors alike. Becca Wilkins reports on how this 'greener' approach is being accepted within the specialist ground engineering sector.



## 38 Engines

European legislation means engine manufacturers will have to comply with stricter emissions controls from 2011. Confronted with developing complex new systems, engine manufacturers are diverting huge efforts and resources into meeting the deadline. Steve Skinner reports.

KHL's

## worldconstructionweek

The international newsletter for construction, rental, lifting, access and demolition

### Latest news on-line

For up-to-the-minute news from the European construction sector, visit our website, [www.khl.com](http://www.khl.com), where breaking stories are posted every day at [www.khl.com/news](http://www.khl.com/news). You can also subscribe to our weekly e-mail newsletter, *World Construction Week* at [www.worldconstructionweek.com](http://www.worldconstructionweek.com).



CONSTRUCTION EUROPE JANUARY 2009 3



Two Liebherr LTB 12+4+1 truckmixer and conveyor combinations have been purchased by D B Concrete of Ardleigh, Essex, UK.

Launches and upgrades aimed at enhancing performance, productivity and flexibility have shaped the concrete industry. **STEVE SKINNER** looks at some of the new and improved products in this well-established sector.

# Concrete optimised

**AT LAST OCTOBER'S SAIE SHOW, SIMEM** unveiled its new Xentrix planetary mixer. The Xentrix is the result of a deep analysis of the concrete market's needs by the company and an intensive research and development phase evaluating technical and engineering issues.

"The Xentrix represents state-of-the-art technology for planetary mixers," said Federico Furlani, managing director of Simem. "The eccentric position of the two main mixing axles together with the centralised input point for cement, aggregates and water from the top guarantees quick dispersion, improved mixing performance and higher concrete quality," said Mr Furlani.

"More mixing per revolution as a result of more paddles also means that Xentrix offers improved production times, and thanks to the high pressure automatic washing system, efficient cleaning also leads to improved maintenance," said Mr Furlani.

SBM Mineral Processing of Austria also used 2008 to launch its Euromix 4000 mobile concrete mixing plant. The Euromix 4000 represents the next step in the Euromix range that starts with the

1000 featuring a capacity of 60 m<sup>3</sup> per hour.

The Euromix 2000 has a capacity of 100 m<sup>3</sup> per hour, while the 3000 raised that to 130 m<sup>3</sup> per hour. Now, through the introduction of the wheel mounted Euromix 4000, capacity has been increased to 170 m<sup>3</sup> per hour.

"Customers need increasingly higher capacities per hour to produce economically," said engineer Gerhard Gschwandtner. "Our Euromix machines are produced with reference back to operators and we have taken into account all of the needs of our key customers in the design process to ensure our machines are user-friendly and easy to handle.

"Furthermore, the use of a mobile Euromix plant offers more economical production at reduced investment and with reduced risks," said Mr Gschwandtner.

In Belgium, the Willy Naessens Group, which manufactures concrete industrial buildings, has elected to rely on a tried and trusted concrete delivery system in the shape of Merlo DBM mixers.

"It might seem a little antiquated to have diesel powered mixers running up and down the assembly lines," said Timothy T'Jampens, production

Doka offers a broad range of safety solutions – including the Platform system Xsafe, the Ladder system XS, and the Load-bearing tower Staxo 100.



Wacker Neuson has launched two new trowel product lines, including the walk behind CT24 range of edging trowels.

manager at Willy Naessens, "but we have found it to be the most effective and efficient way of satisfying the varying needs of our customers.

"In fact, even in our newest factory unit, just being finished, we will employ the same method."

The three DBM machines used at the factory were all supplied by Merlo Benelux and the Willy Naessens team never even look elsewhere when a new machine is needed as, "this is the only supplier with good after sales support in Belgium" said Mr T'Jampens.

The Merlo DBM mixers produce up to 170 m<sup>3</sup> of concrete each day, 40 m<sup>3</sup> of which is mixed by the machines themselves. "We run the machines for some 9000 hours before replacing them," said Mr T'Jampens, "and even then, we sell them on."



## PUMPING

Also at SAIE in 2008, Imer introduced its new Booster 15 twin cylinder piston pump for concrete. The Booster 15 is capable of pumping concrete with aggregate sizes up to 25 mm at a pressure of up to 70 bar.

A variable hourly production of between 2 m<sup>3</sup> and 15 m<sup>3</sup> per hour can be adjusted to provide a continuous flow. "Imer Group developed the Booster 15 to guarantee high performance on small construction sites," said a company spokesperson.

"Fitted with a four cylinder diesel Lombardini liquid cooled engine, the Booster 15 is particularly suited to the rental sector as it is easy to handle and simple to use," continued the spokesperson.

Integral in the design of the new pump were measures to comply with anti-pollution



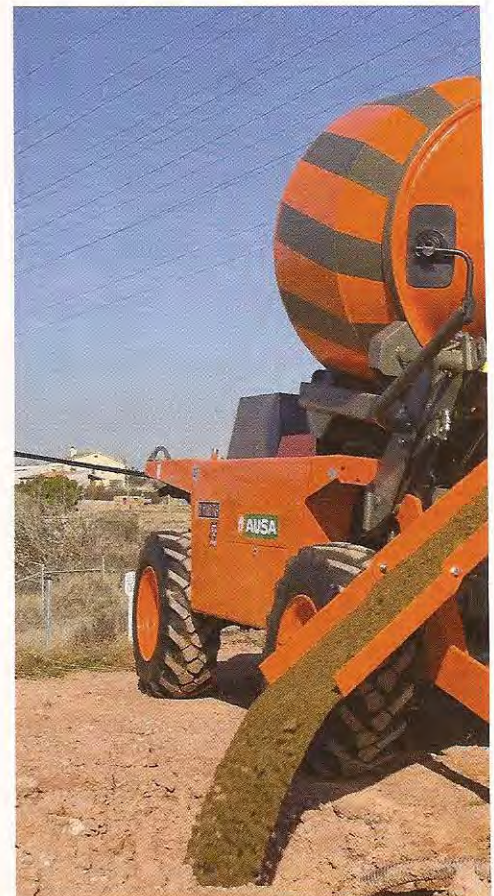
## A million metres

**PJ DAVIDSON CONTRACTORS OF EXETER, UK, RECENTLY PAVED ITS ONE MILLIONTH** linear metre of concrete slipform using Gomaco Commander III pavers.

The company purchased its first machine in 1994 and now operates a fleet of four machines, all of which are less than three years old. "I wouldn't dream of trying anything else because they are so reliable," said Peter Davidson, company principal.

The machine that took the contractor to its magic million metre mark was only delivered in September and is currently working round-the-clock on a Balfour Beatty and Skanska joint venture project to widen the M1 motorway in the UK on behalf of the Highways Agency.

"We're installing 32 km of 900 mm high ventral reservation stepped barrier, 28 km of V-channel and 3000 m of slot drain," said Mr Davidson.



regulations, with special attention also being given to soundproofing the engine bay.

In the autumn, Schwing released details of a redesign for its S39SX truck-mounted concrete pump to extend its flexibility and make it easier to handle for pump operators. The popularity of the S39SX has partly been attributed to its overall length of less than 12 m and weight of below 26 tonnes. These characteristics mean that operators do not require special authorisation or permits from authorities for on-road driving. At the same time, the S39SX offers operators the opportunity to compete in the 40 m class.

"The new plastic water tank has +30% more capacity, up to 600 l, and has been installed in a user-friendly position near the feeding hopper," said a Schwing spokesman. "We have also increased the volume of the hydraulic reservoir by +10% to 600 l.

"In combination with arc-shaped outriggers to the fore and H-type outriggers at the rear, the machine offers short set-up times and a space-

**Ausa of Spain launched its X1100RH self-loading concrete mixer last year featuring a 1,1 m<sup>3</sup> capacity and capable of achieving yields of up to 6 m<sup>3</sup> of concrete per hour. Permanent four wheel drive means it can handle inclines of 32° with a full load.**



## Hospital operation

**SGB'S GASS FORMWORK HAS BEEN USED TO REDUCE COSTS AND IMPROVE** concreting efficiency at the new acute hospital in Peterborough, UK.

Contractor, Buildstone, is using lightweight aluminium GASS support legs in tandem with SGB's DU-AL beams to achieve the optimum structural support for the permanent formwork while reducing the quantity of equipment required.

Buildstone's consulting engineer calculated that by erecting the towers in parallelogram format it would reduce the amount of back-propping required, and thereby minimise the amount of support equipment. "The GASS system was the only formwork system available that could be effectively applied in this way," said a Buildstone spokesman.

"By using 3 m ledger frames offset at an angle of 135° rather than the usual 2,1 m ledger frames at 90°, we've been able to transfer the load over a wider area via DU-AL aluminium beams positioned both above the soffit and beneath the GASS legs," continued the spokesman.

"This propping configuration was made possible by the unique eight-point GASS connector which allows ledger frames to be attached to the leg at variable angles in increments of 45°," said the spokesman.

saving installation process requiring up to -80% less set-up space than a comparable machine. That said, the pump provides the operator with a stable 200° working range," confirmed the spokesman.

"In conjunction with the Big Rock concrete valve, customers get a long-stroke pumping unit combining minimum wear with quiet operating characteristics and a placing performance of